



Shown with a custom-fabricated liner purchased locally

ENERGY STAR® rated hood for ducted applications provides optimum energy savings.

Heat Sentry™ detects excessive heat and adjusts speed to high automatically.

Charcoal filter option available for recirculation applications (Please note: Recirculation installations will not meet ENERGY STAR® requirements).

Works with optional Universal Make-Up Air Dampers. (The P195ES does not require make-up air per IRC M1503.4 requirements.)

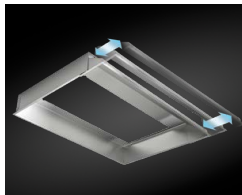
Model Numbers:
P195ES70SB



Two fluorescent lights provide bright cooktop lighting.



Variable 3-speed slider switch control enables the user to choose operating preference.



Protect cabinetry from steam and grease with stainless steel liners that provide a custom fit.

Hood Sizes

Widths	27-1/2"
Depth	11-1/4"
Finish	
Stocked	Brushed Stainless Steel (Grade 430)
Special Order	Not Available

Features

Lighting Type	Fluorescent Bulbs 13W, G24Q-1
Number of Lamps	2
Lighting Levels	1
Lighting Lamps Included	Yes
Control Type	3-speed Slider Switch
Control Features	Heat Sentry™
Remote Control	Not Available
Filter Type	Mesh Grease Filter
Non-ducted Capability	Yes

Hood Blower Included (P195ES ENERGY STAR® Rated)

Internal	
Max Blower CFM*	370
Sones Normal Setting**	0.3

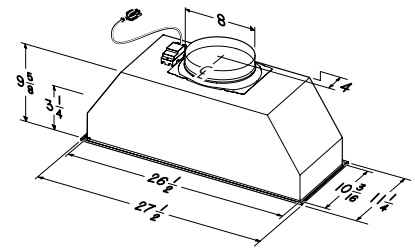
*MAX Blower CFM indicates the performance of the hood blower in open air.
**Normal setting corresponds to speed 1.

Accessories

Recirculation Filter	ROUNDFILTER
Liners: Optional	L7030 / L7036 / L7048
Universal MUA Dampers	MD6TU for 6" duct MD8TU for 8" duct
Fresh Air Inlets	641FA (6"), 643FA (8"), 610FA (10")

Installation Requirements

Amps @ 120V	2.8
Electrical Connection	Plug In
Duct Size: Internal Blower	8" (P195ES70)
Duct Size: External Blower	Not Available
Duct Direction	Vertical
Backdraft Damper	Included



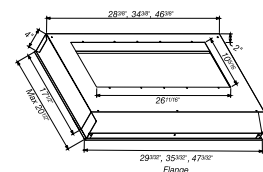
Installation height above the cooking surface: 24"-30"

For more details or HVI rated performance for this model see the product specifications sheet found at www.BESTRangeHoods.com

Liners for P195ES

- Brushed Standard Stainless Steel finish
- 30", 36" and 48" widths
- Flexible design allows 17-1/2" to 20-1/2" depth adjustment
- Optional ambient light panel

L7030, L7036, L7048 for P195ES70SB



Performance is a beautiful thing.

It can be subtle or bold. It can take months or years to hone.
Then impress you in an instant.

A great performance gives the audience exactly what they want and more than they ever imagined. And it inspires everyone and everything around it to be better.

At **BEST**, we make high performance range hoods that perform beautifully. Astonishingly quiet. Impressively effective. Remarkably efficient. And perfectly suited for the most distinguished kitchens.

Whether it's the centerpiece of the room or letting its surroundings shine, **BEST** is where high-end performance inspires.

best[®]

PERFORMANCE THAT INSPIRES