

For replacement parts or if further help is needed concerning this appliance call: Toll Free 1 888 9 FNP USA (1 888 936 7872) or write to:  
 Fisher & Paykel Appliances Inc., 5900 Skylab Road, Huntington Beach, CA 92647  
 or contact us through our web site: [www.fisherpaykel.com](http://www.fisherpaykel.com)

## INSTALLATION INSTRUCTION FOR MICROWAVE BUILT-IN TRIM KIT

### Important Notes to Consumer & Installer:

- Before you begin, read these instructions completely.
- Microwave trim kit must be installed in compliance with governing codes.
- Proper installation is the responsibility of the installer, failure due to improper installation is not covered under the warranty.
- Keep these instructions for future reference.
- Be sure to leave these instructions with the customer.

### Requirements:

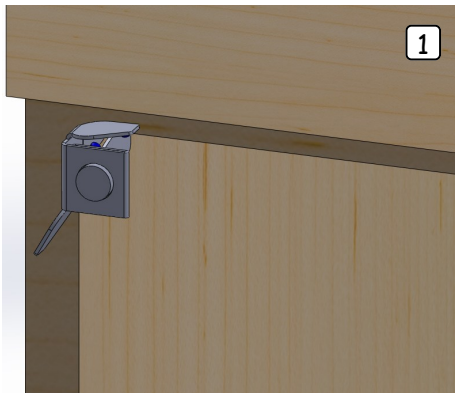
- Microwave oven must be installed into cabinetry and properly supported from underneath.
- A (6) square inch cut out must be made within the cabinetry for ventilation.

### Tools:

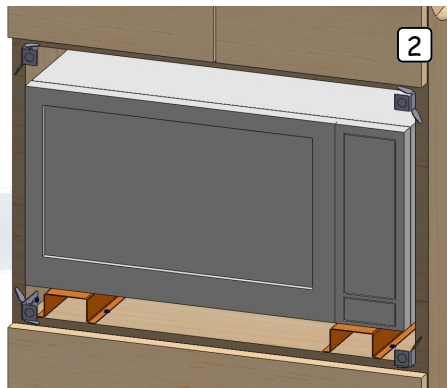
- Screwdriver and/or Cordless drill, Phillips or Robertson & Measuring tape

## FLUSH MOUNT INSTALLATION

**F**asten the magnet mounting brackets into the 4 corners of the cabinet. (1)



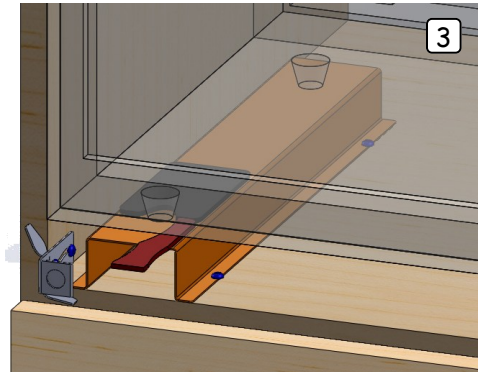
**P**lace the runners in the cabinet and align them with the front edge of the shelf. Take the microwave and place it on top of the runners. Center the microwave inside the cabinet opening. **Important:** make sure that the microwave feet are centered on the runners. Mark the position of the runners. Remove the microwave and secure the runners with the supplied screws. Plug in the microwave and place it on the runners. Center the microwave within the opening. Then, take the EuroTrim™ and click it onto the magnet mounts. Next, open the microwave door and check for proper clearances. Adjust the alignment of the EuroTrim™ by removing it briefly and repositioning the flaps of the magnet mounts. Adjust until you are satisfied with the placement. Next, remove the EuroTrim™ without moving the microwave. (2)



**P**eel off the protective coating from the STOPADS®. **Careful:** They are very sticky. Gently hook the STOPADS® behind the front feet of the microwave.

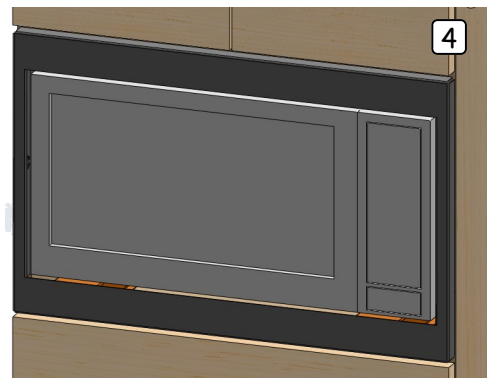
After initial contact firmly press them onto the runners. **Hint:** Lift the microwave up at the front and push it back far enough to rest the feet temporarily on the STOPADS®.

Next, wiggle the handles of the STOPADS® horizontally until they break off. Then, pull the microwave toward you until the feet come to a rest inside the STOPADS®. (3)



**L**astly, take the EuroTrim™ and click it into position.

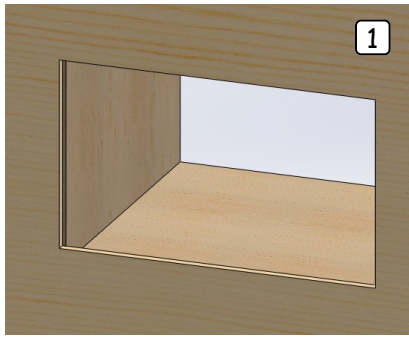
If you are satisfied with the installation, remove it one more time, peel off the protective PVC coating from the EuroTrim™ and click it into place for its final mount. (4)



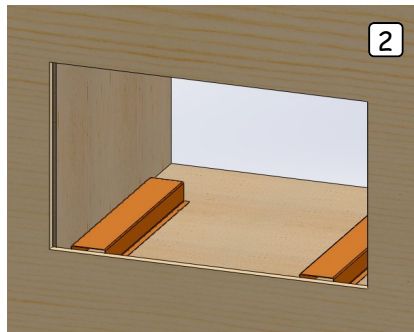
*The End*

## SURFACE MOUNT INSTALLATION

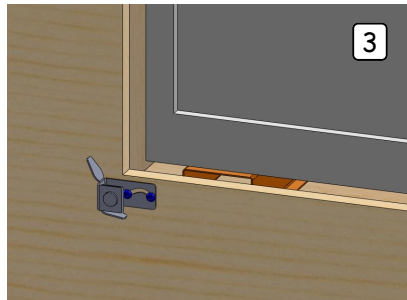
**C**reate a cutout as defined in the planning guide. **Important:** make sure that the distance between the shelf and the bottom edge of the cutout is as specified in the planning guide. (1)



**P**lace the runners in the cabinet and align them with the front edge of the shelf. Take the microwave and place it on top of the runners. Center the microwave inside the cabinet opening. **Important:** make sure that the microwave feet are centered on the runners. Mark the position of the runners. Remove the microwave and secure the runners with the supplied screws. (2)

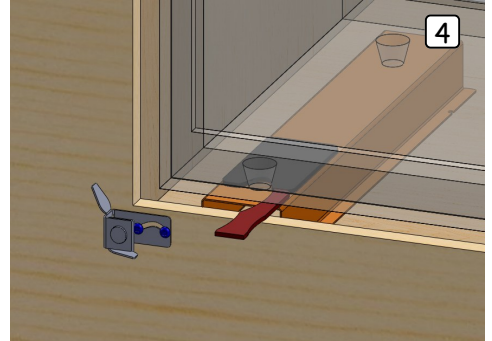


**P**lug in the microwave and place it on the runners. Center the microwave within the opening. Temporarily mount the EuroTrim™ and mark the location of its outside corners with a non-permanent marker or pen. Bend the magnet mounts as shown and screw them onto the front of the panel. Keep about 1/4"-inch (6mm) distance from the marked outside corners. Bend the flaps

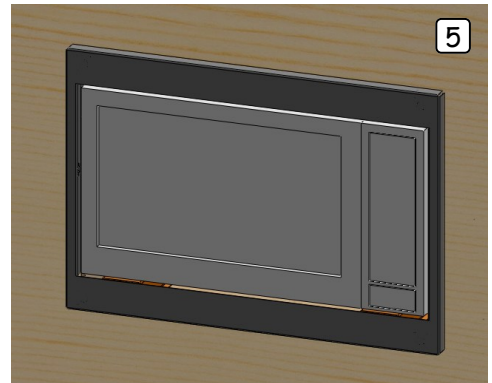


of the magnet mount as required to fine-tune the alignment between the EuroTrim™ and the microwave. Next, open the microwave door and check for proper clearances. Adjust the alignment of the EuroTrim™ by removing it briefly and repositioning the flaps of the magnet mount until you are satisfied. (3)

**R**emove the EuroTrim™ without moving the microwave. Peel off the protective PVC coating from the STOPADS©. **Careful:** They are very sticky. Gently hook them behind the front feet of the microwave. After initial contact firmly press them onto the runners. **Hint:** Lift the microwave up at the front and push it back far enough to rest the feet temporarily on the STOPADS©. Next, wiggle the handle of the STOPADS© horizontally until they break off. Then, pull the microwave toward you until the feet come to a rest inside the STOPADS©. (4)



**L**astly, take the EuroTrim™ and click it into position. If you are satisfied with the installation, remove it one more time, peel off the protective PVC coating from the EuroTrim™ and click it into place for its final mount. (5)



*The End*

For replacement parts or if further help is needed concerning this appliance call:  
Toll Free 1 888 9 FNP USA (1 888 936 7872) or write to:  
Fisher & Paykel Appliances Inc., 5900 Skylab Road, Huntington Beach, CA 92647  
or contact us through our web site: [www.fisherpaykel.com](http://www.fisherpaykel.com)

# FISHER & PAYKEL